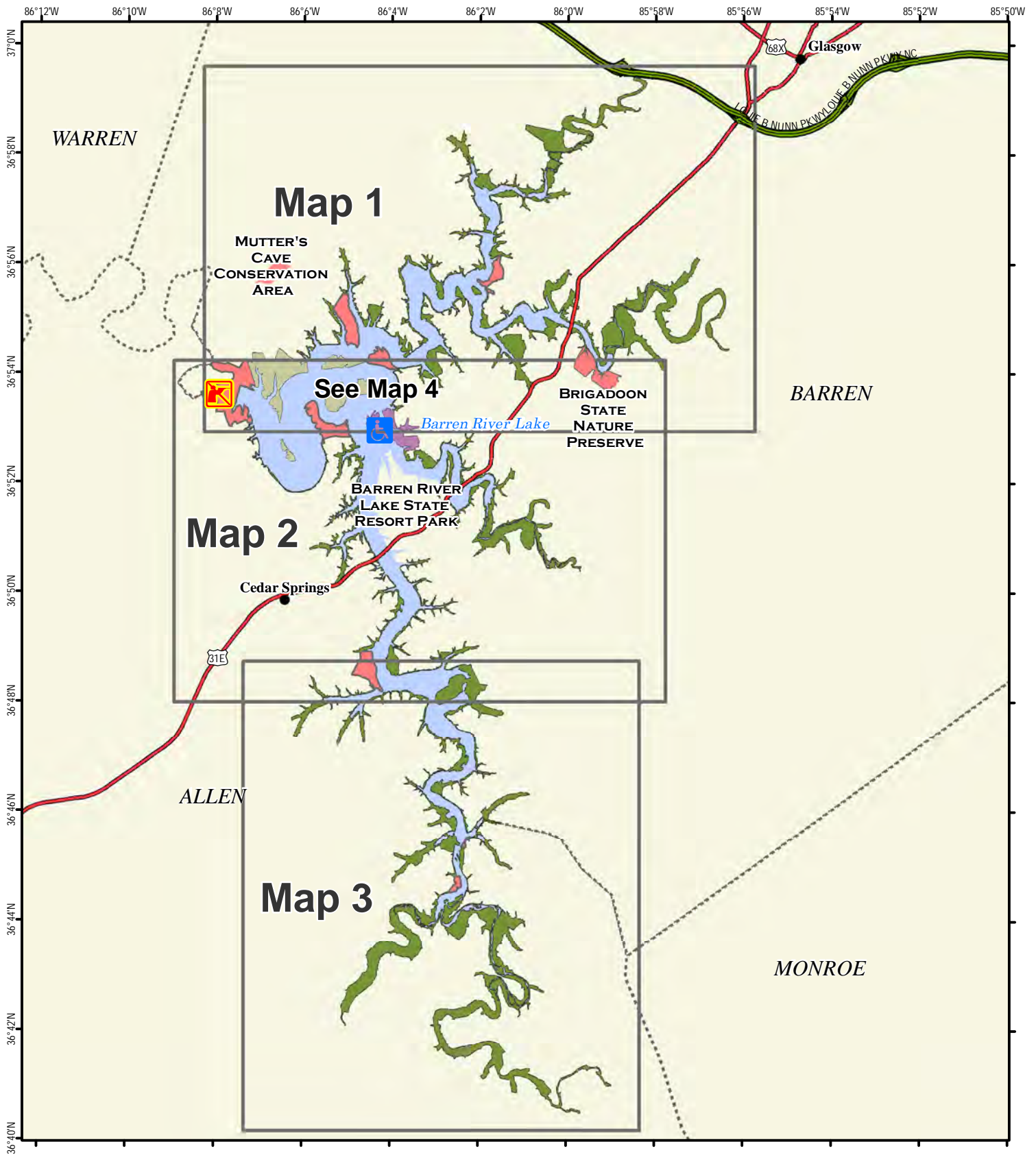


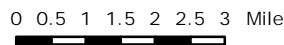


Barren River Lake Wildlife Management Area Index Map



A map legend and additional information are provided on PDF pages that accompany this map.

Publication Date: 6/19/2018



Scale 1:175,000

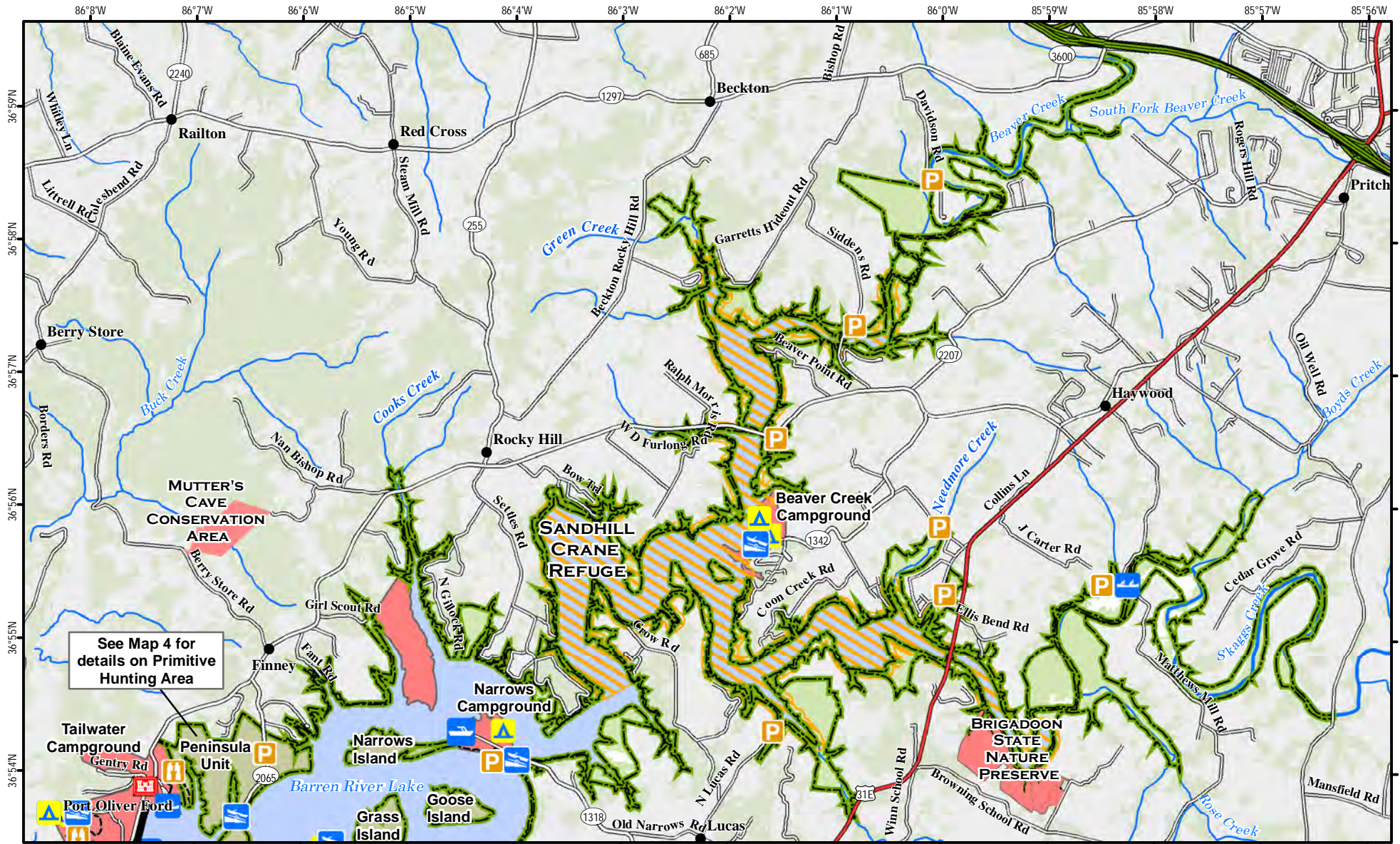


Note to Map Users

Map prepared by Kentucky Department of Fish & Wildlife Resources (KDFWR). Although KDFWR strives for accuracy, data used to create this map are from a variety of sources and dates; as such, KDFWR makes no representations regarding the accuracy or fitness for use of the information furnished herein.



Barren River Lake Wildlife Management Area Map 1



See Map 4 for details on Primitive Hunting Area

See adjoining Map 2

A map legend and additional information are provided on PDF pages that accompany this map.



Scale 1:75,000

Publication Date: 11/30/2018
Land Classification from National Land Cover Database 2011



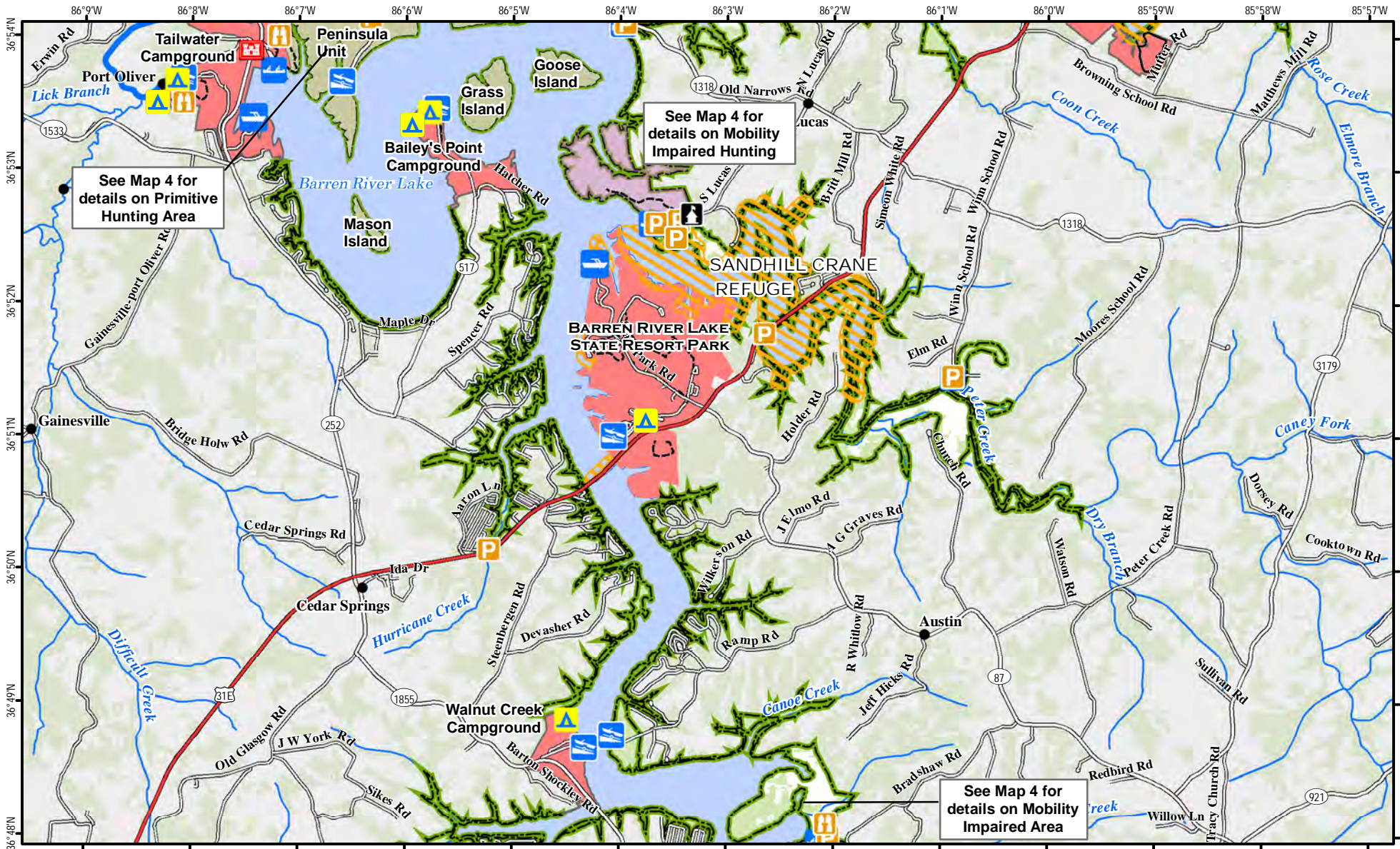
Note to Map Users

Map prepared by Kentucky Department of Fish & Wildlife Resources (KDFWR). Although KDFWR strives for accuracy, data used to create this map are from a variety of sources and dates; as such, KDFWR makes no representations regarding the accuracy or fitness for use of the information furnished herein.

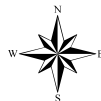


Barren River Lake Wildlife Management Area Map 2

See adjoining Map 1



A map legend and additional information are provided on PDF pages that accompany this map.



0 0.5 1 1.5 2 Mile

Scale 1:75,000

See adjoining Map 3

Note to Map Users

Map prepared by Kentucky Department of Fish & Wildlife Resources (KDFWR). Although KDFWR strives for accuracy, data used to create this map are from a variety of sources and dates; as such, KDFWR makes no representations regarding the accuracy or fitness for use of the information furnished herein.

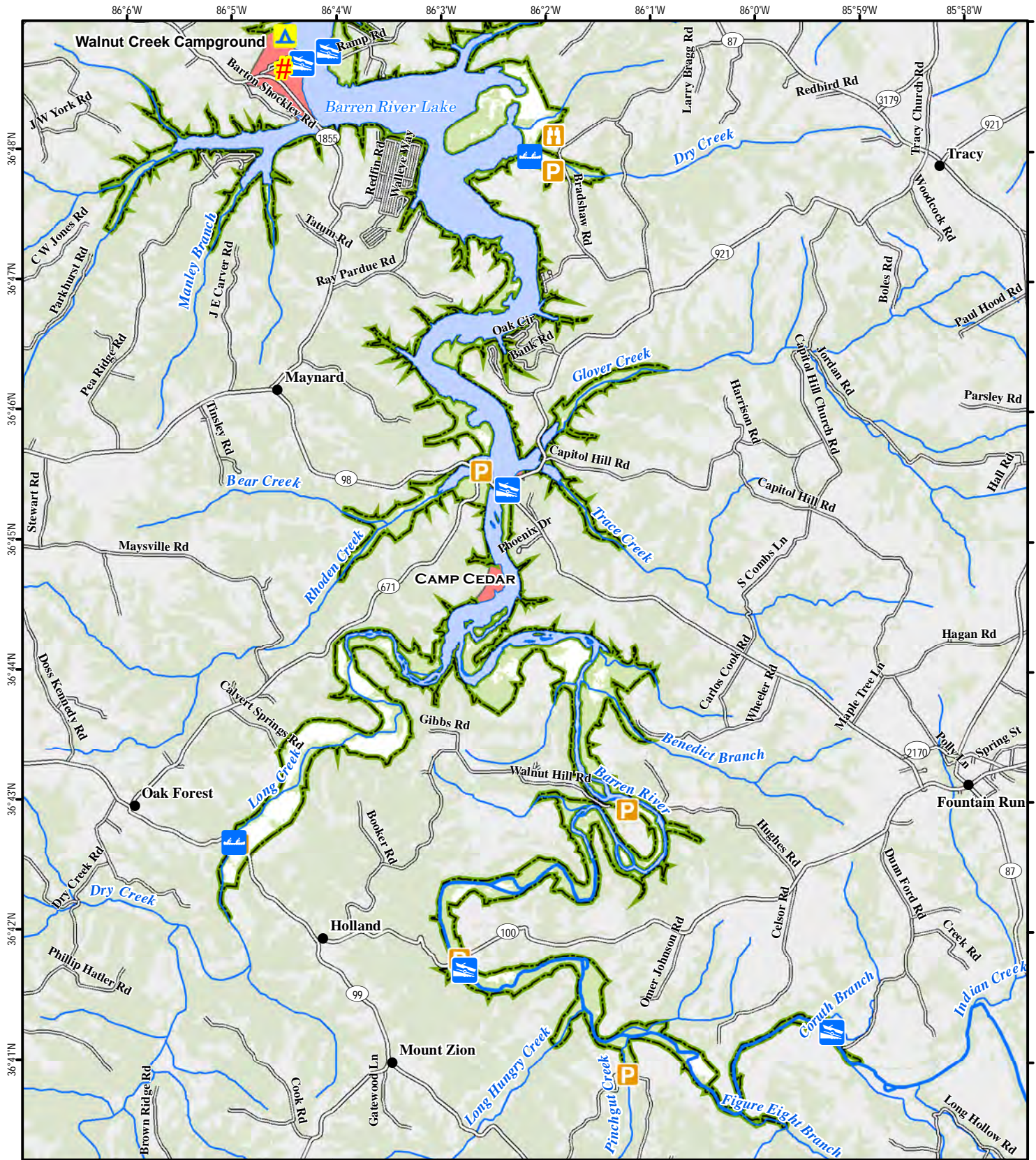
Publication Date: 11/30/2018
Land Classification from National Land Cover Database 2011





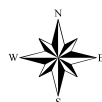
Barren River Lake Wildlife Management Area Map 3

See adjoining Map 2



A map legend and additional information are provided on PDF pages that accompany this map.

Publication Date: 4/3/2019
Land Classification from National Land Cover Database 2011



Scale 1:75,000

Note to Map Users

Map prepared by Kentucky Department of Fish & Wildlife Resources (KDFWR). Although KDFWR strives for accuracy, data used to create this map are from a variety of sources and dates; as such, KDFWR makes no representations regarding the accuracy or fitness for use of the information furnished herein.





Barren River Lake WMA Primitive & Mobility Impaired Hunting Areas Detail Map 4



86°7'W

86°6'W

86°5'W

86°4'W

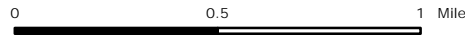
86°3'W

Legend

- Primitive Hunting Only
- Mobility Impaired Hunting Area



A map legend and additional information are provided on PDF pages that accompany this map.



Scale 1:30,000

Publication Date: 11/30/2018
Imagery from Farm Service Agency 2016



Note to Map Users

Map prepared by Kentucky Department of Fish & Wildlife Resources (KDFWR). Although KDFWR strives for accuracy, data used to create this map are from a variety of sources and dates; as such, KDFWR makes no representations regarding the accuracy or fitness for use of the information furnished herein.

Barren River Lake WMA Information

Public Hunting Area Location



Regional Locator



WMA Overview

Location & Size: Allen & Barren counties. WMA is 8,735 acres, Barren River Lake is 9,674 acres.

Contact: (270) 646-5167; COE office (270) 646-2055

Elevation: minimum 482 feet, maximum 752 feet.

Entrance GPS coordinates: Latitude N 36.87774, Longitude W -86.05559

Area Habitat: mostly forest: open land 13%, forest 78%, wetland 4%, open water 5%.

Directions & Description:

WMA consists of shoreline surrounding Barren River Lake. Access from US 31E and KY 87, 98, 100 and KY 252, and by lake.

Hilly to gently sloping terrain, with woodlands and cleared bottomlands maintained for wildlife.

Peninsula Unit, Grass, Goose, Mason and Narrows islands open to primitive weapons hunting only. Tailwater Campground open year-round; no camping on management area. The Dry Creek unit is the mobility impaired designated area. Boating, fishing on Barren Lake. Camping, golf, horseback riding, swimming, and lodge accommodations at nearby Barren River Lake State Resort Park.

Owned by U.S. Army Corps of Engineers.

Online Resources

Public Hunting Area users must abide by the Kentucky hunting, trapping, and fishing regulations. It is incumbent on persons using Public Hunting Areas to become familiar with these regulations. Kentucky Department of Fish & Wildlife Resources provides these regulations on our Web site at fw.ky.gov or by calling 1-800-858-1549.

Wildlife Management Area Map Notes & Legend

NOTE TO MAP USERS:

For most WMA maps the landscape is depicted using a combination of elevation contours, hillshading and a green tint indicating woodland areas that is derived from satellite imagery. On WMAs that are relatively small or have a history of surface mining aerial photography is used.

WMA Map Legend

	WMA Office		WMA Boundary		Populated Place
	Information Kiosk		Aerial imagery		Kentucky Boundary
	Check station		Other Public Hunting Areas		Interstate Highway
	Mobility-impaired Hunting Blind		Area Off Limits		Kentucky Parkway
	Trailhead		No Hunting		U.S. Highway
	Horseback Trailhead		Seasonally Restricted Access		State Highway
	Parking Lot		Mobility Impaired Hunting Area		Local Road
	Picnic Area		Primitive Hunting Only		Forest Service Road
	Restrooms		Open Water		Active Railroad
	Wildlife Viewing Site		Wetland		Abandoned Railroad
	Interpretive Site		Woodland		Federal Recreation Trail
	Retriever Training Site				WMA Road
	Gate				WMA Foot Trail
	Campground				WMA Horse Trail
	Cemetery				Gas Pipeline
	Corps of Engineers Office				Powerline
	Waterfowl Blind				Rivers and Streams
	Any Boat				Dam
	Bank Access				Trout Waters
	Carrydown Only				Elevation Contour
	Fishing Pier				
	Small Boat Only				
	Shooting Range				
	State Park Office				